



# Bridges over Yewa river lagoon

Porto Novo, Benin / 2021

Structural type

Preliminary Project of a carriageway connection between the Sèmè crossroads and Porto-Novo with the construction of a bridge over the lagoon and the 2X2 lane connection to the Boulevard du Cinquentaenaire

Characteristics

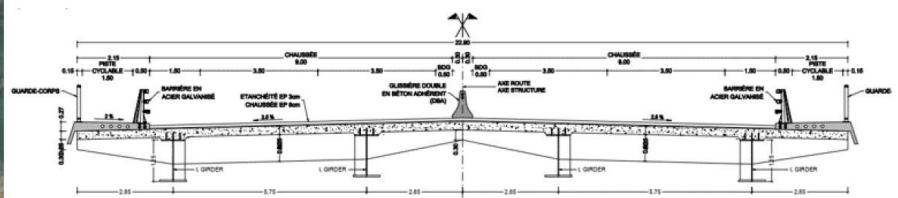
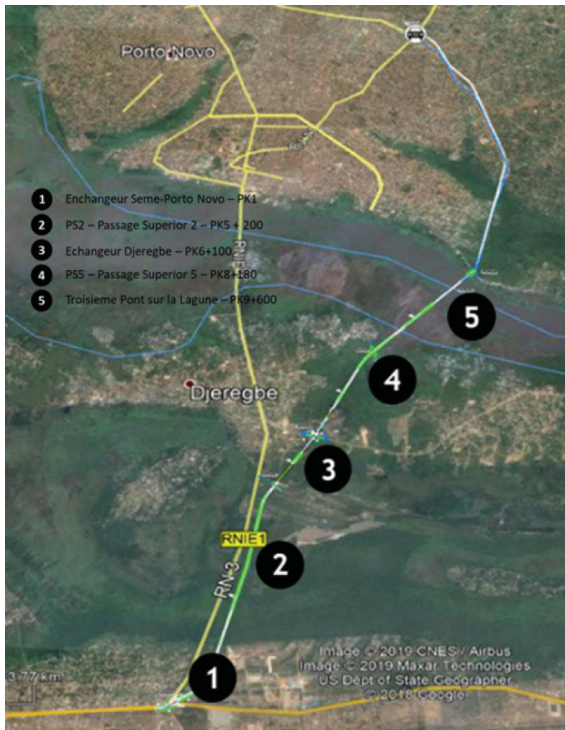
Dual carriageway with 2x2 lanes, median and lateral lanes, 15 km in length, including 5 Composite steel-concrete girder, with a maximum length of 810 m

Client

QGMI

Scope

Preliminary design



Preliminary Project of a carriageway connection between the Sèmè crossroads and Porto-Novo with the construction of a bridge over the lagoon and the 2X2 lane connection to the Boulevard du Cinquentaenaire



C/ Barquillo 23, 2º | 28004 Madrid | España  
T. (+34) 917 014 460 | F. (+34) 915 327 864  
www.fhecor.com | fhecor@fhecor.es